

GNU GRUB version 2.04-12

```
Aktuelles Betriebssystem von NVME/ SSD/ HD starten
*Basis-BM2LTS-Installation
NRS-Installation
NRS-Backup
Clonezilla-live Optionen
```

Use the ↑ and ↓ keys to select which entry is highlighted.  
Press enter to boot the selected OS, 'e' to edit the commands before booting or 'c'  
for a command-line.



**BM<sup>2</sup>LTS** **UHD**  
**SAT>IP**

GNU GRUB version 2.04-12

```
*Basis-BM2LTS-Installation NVME
Basis-BM2LTS-Installation SDA
```

Use the ↑ and ↓ keys to select which entry is highlighted.  
Press enter to boot the selected OS, 'e' to edit the commands before booting or 'c'  
for a command-line. ESC to return previous menu.



**BM<sup>2</sup>LTS** **UHD**  
**SAT>IP**

GNU GRUB version 2.04-12

```
*Basis-BM2LTS-Installation (/dev/nvme0n1)
Recovery-Installation (/dev/nvme0n1p2)
UEFI-Installation (/dev/nvme0n1p1)
```

Use the ↑ and ↓ keys to select which entry is highlighted.  
Press enter to boot the selected OS, 'e' to edit the commands before booting or 'c'  
for a command-line. ESC to return previous menu.



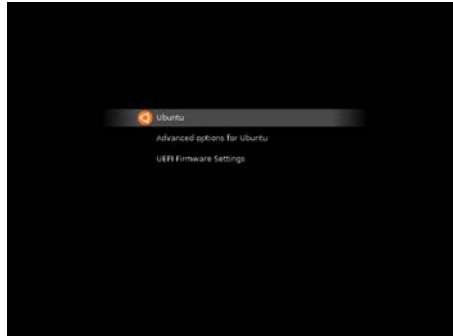
**BM<sup>2</sup>LTS** **UHD**  
**SAT>IP**

Clonezilla - Opensource Clone System (OCS) | Mode: restoredisk  
Imagefile für Wiederherstellung auswählen:  
BM2LTS\_v4.2.36\_Release\_2023-0321-1728\_nvme0n1\_250GB  
<Ok> <Abbrechen>

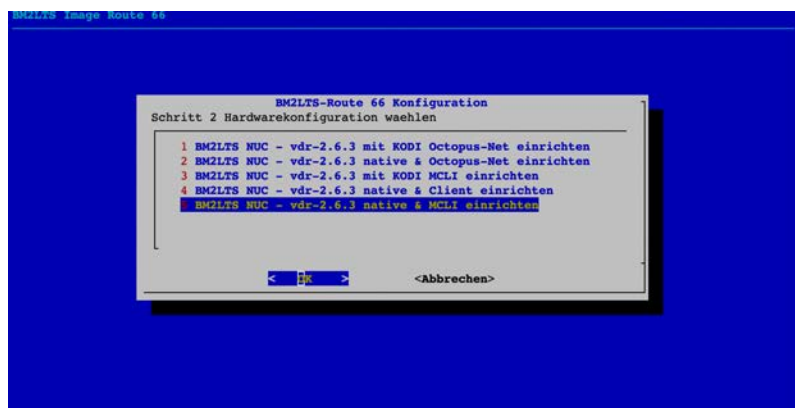
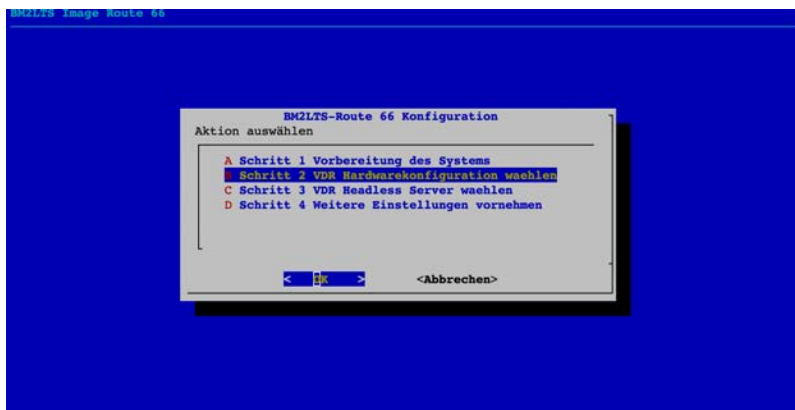
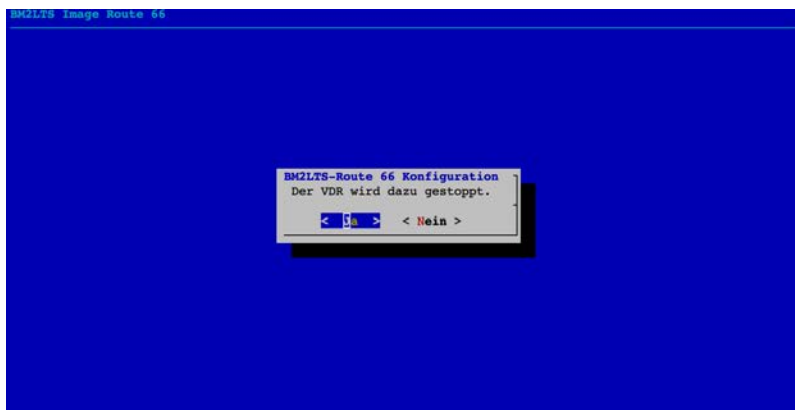
Partclone  
Partclone v0.3.17 http://partclone.org  
Starting to check image (-)  
Calculating bitmap... Please wait...  
done!  
File system: EXTFS  
Device size: 52.4 GB = 12800000 Blocks  
Space in use: 39.3 GB = 9601507 Blocks  
Free Space: 13.1 GB = 3198493 Blocks  
Block size: 4096 Byte  
  
Elapsed: 00:21:07 Remaining: 00:09:13 Rate: 1.306B/min  
Current Block: 9023976 Total Block: 12800000  
  
Data Block Process: 69.59%  
Total Block Process: 70.50%

```
[ 2276.705179] [2916]: Failed to unmount /run/live/medium: device or resource busy  
[ 2276.793214] systemd-shutdown[1]: Could not detach loopback /dev/loop0: Device or resource busy  
Please remove the live-medium, close the tray (if any) and press ENTER to continue: _
```

# route66



```
root@BM2LTS-KDD:~# route66
```



BM2LTS Image Route 66

BM2LTS-Route 66 Konfiguration  
Bestätigen Sie Ihre Auswahl:  
S BM2LTS NUC - vdr-2.6.3  
native & MCLI einrichten

< **S** > < Nein >

BM2LTS Image Route 66

BM2LTS-Route 66 Konfiguration  
Der VDR wird jetzt neu  
gestartet !

< **S** **K** >